

LITTLETON MEADOWS



Connells

LITTLETON MEADOWS



Littleton Meadows is a collection of 2, 3 and 4 bedroom luxury homes located in the picturesque rural village of South Littleton, set on the Worcestershire/Warwickshire border.

Location:

South Littleton is a charming village set on the Worcestershire/Warwickshire border, midway between Bidford-on-Avon and Evesham. With excellent access to both the M40 and M42 and railway links from Honeybourne to London Paddington and Worcester Foregate Street.

Littleton Meadows is in a convenient position within the village. Local amenities include a Post Office within a general store, bowling green, tennis club and a recreational ground with a childrens play area. The village primary school "The Littletons C of E First School, is only 0.4 miles away.



SPECIFICATION



All homes come with a 10 year Warranty.



Kitchens

The kitchens on the larger houses are being sourced from the Solid Wood Kitchen Company, with top of the range granite worktops and quality branded appliances.

The specification on the smaller units is being kept to high standard, with Benchmarx kitchens and quality branded appliances. All of the flooring to these areas will be tiled.

Bathrooms

All of the bathrooms will be fitted out with top of the range Roca suites, with part tiling to the walls and full tiling to the floors and high specification fittings.

FLOOR PLANS



Ground Floor



First Floor

This plan is for illustration purposes only and may not be representative of the property. Plan not to scale.

Powered by audioagent.com



Ground Floor



First Floor

This plan is for illustration purposes only and may not be representative of the property. Plan not to scale.

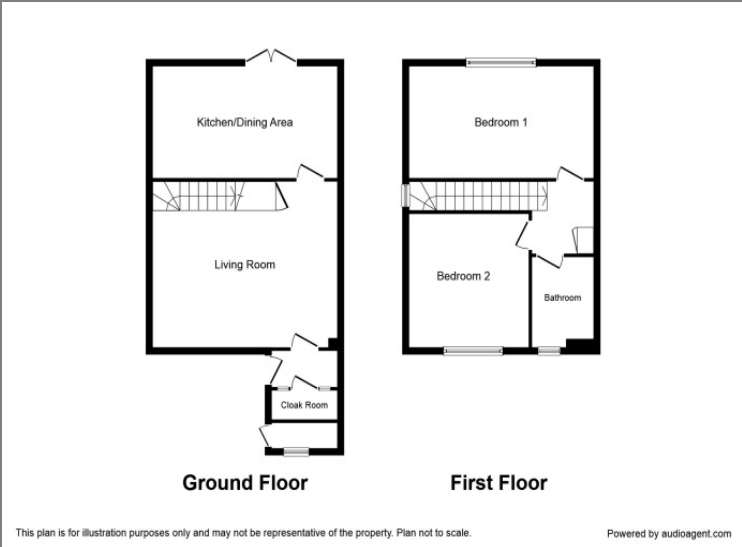
Powered by audioagent.com

FOXGLOVE – Plots 17 & 20
Approximately 1680 sq ft

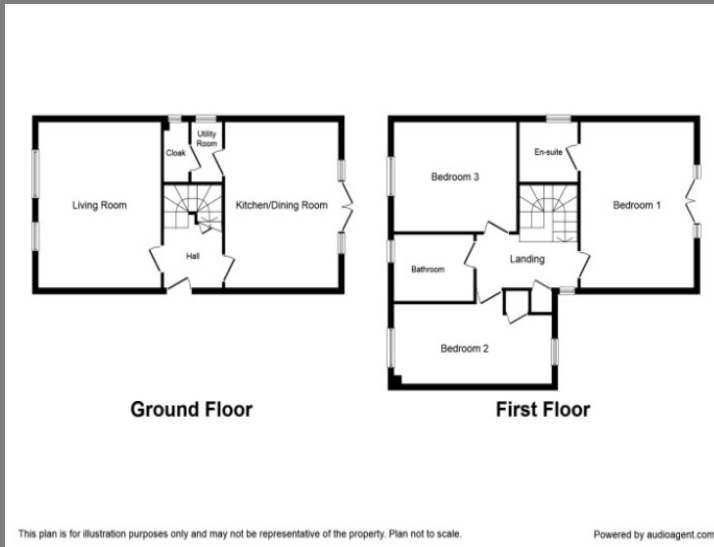
PRIMROSE – Plots 18 & 19
Approximately 1388 sq ft

FLOOR PLANS

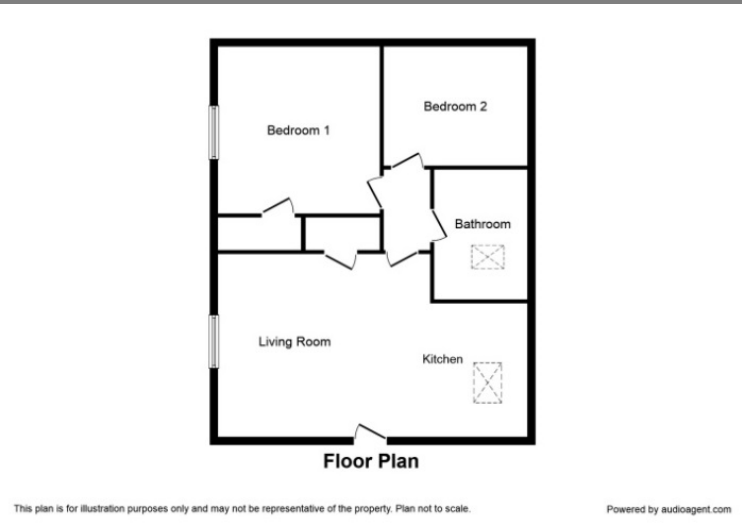
ELDER
Plots 15 & 16
Approx.
800 sq ft



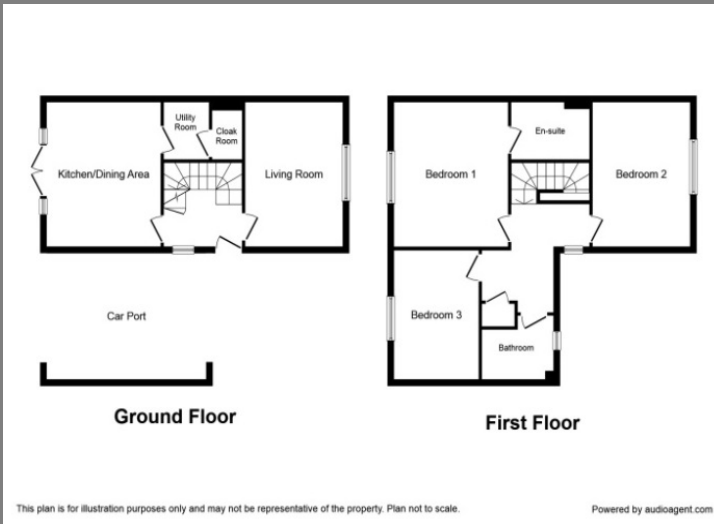
BUTTERCUP
Plots 11 & 12
Approx.
1033 sq ft



FERN
Plot 21
Approx.
550 sq ft

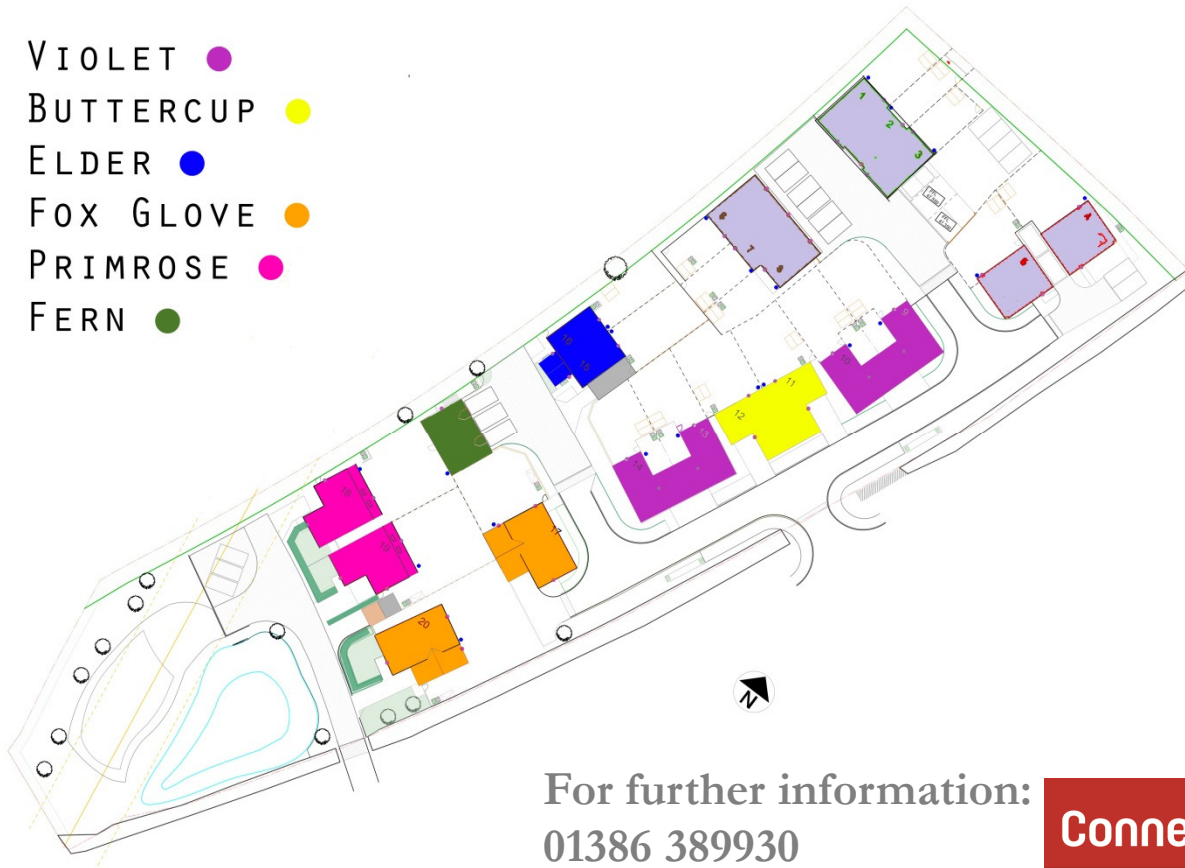


VIOLET
Plots 9, 10,
13, 14
Approx.
1003 sq ft



SITE PLAN

VIOLET ●
BUTTERCUP ●
ELDER ●
FOX GLOVE ●
PRIMROSE ●
FERN ●



For further information:
01386 389930

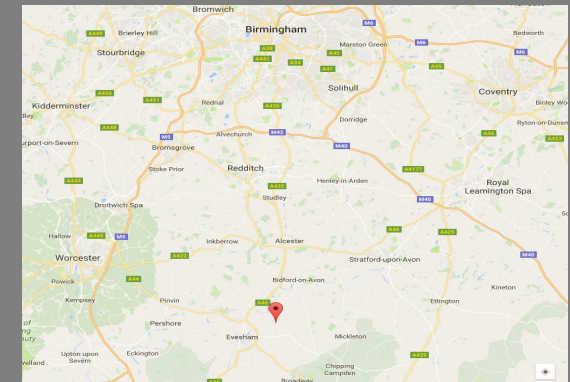
Connells

Approximate travel distance to:

- Honeybourne Train Station: 3 miles
- Birmingham: 47 miles
- Worcester: 19 miles
- London: 113 miles

Site address:

Station Road, South Littleton,
Evesham, Worcestershire,
WR11 8TE



Every care has been taken to ensure the accuracy of the specific information. The contents of these particulars do not form or constitute a warranty or represent part of any offer or contract. Any measurements indicated are supplied for guidance only and as such much be considered incorrect. Potential buyers are advised to recheck measurements before committing to any expense. The developer reserves the right to amend and/or update the specification at their discretion, please confirm with the selling agent prior to reservation.

MONEY LAUNDERING REGULATIONS. Intending purchasers will be asked to produce identification documentation at a later stage and we would ask for your co-operation in order that there will be no delay in agreeing the sale.